

FOR LEASE OFFICE/WAREHOUSE

225 THOMAS AVE N, MINNEAPOLIS, MN



MONARCH

COMMERCIAL REAL ESTATE



Located in the dynamic Bryn Mawr neighborhood just west of Downtown Minneapolis, 225 Thomas Ave N offers convenient access to an array of amenities, including breweries, coffee shops, and scenic trails. Just minutes from the North Loop and major freeways (I-394 and Hwy 100), this location is **ideal** for companies seeking a balance of **urban proximity** and **neighborhood charm**. The property is also near Theodore Wirth Park and the Cedar Lake Trail, offering tenants **easy access to outdoor recreation** and bike commuting.

PROPERTY HIGHLIGHTS:

- **10,530 SF** of office and **1,840 SF** of warehouse available
- Availability:
 - First Floor (Suite A): Contiguous **4,305 SF** office & **1,840 SF** warehouse
 - Second Floor (Suite B): Contiguous **4,368 SF** Office
 - First Floor (Suite C): **1,857 SF** Office
- Featuring **move-in ready** office finishes
- Select suites can be **delivered furnished**
- Parking Ratio: 4/1000SF weekdays until 3pm & ample street parking

CONTACT

KYLE KALIVODA

DIRECTOR

KYLE@MONARCHCRE.COM

763 242 8127

BEN JENSEN

PRINCIPAL

BEN@MONARCHCRE.COM

612 999 5339

MONARCHCRE.COM

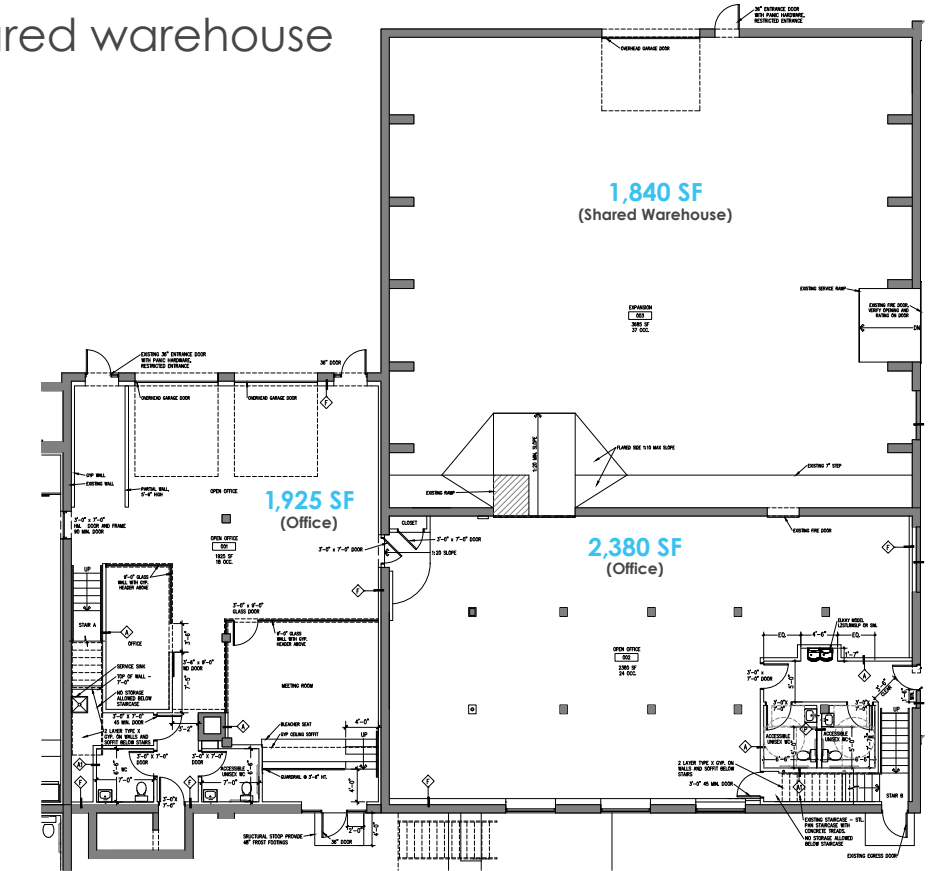
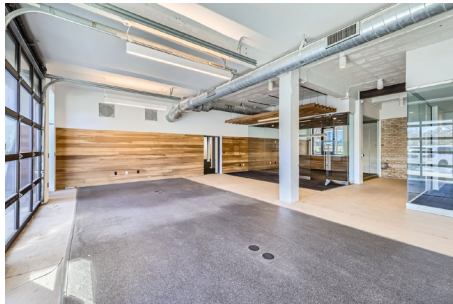
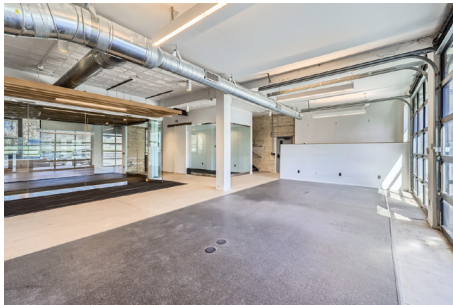
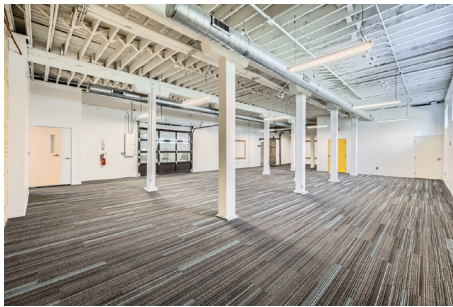
AERIAL MAP

KYLE KALIVODA
 DIRECTOR
 KYLE@MONARCHCRE.COM
 763 242 8127

BEN JENSEN
 PRINCIPAL
 BEN@MONARCHCRE.COM
 612 999 5339

FLOOR PLAN

Suite A: 4,305 SF contiguous office
1,840 SF shared warehouse



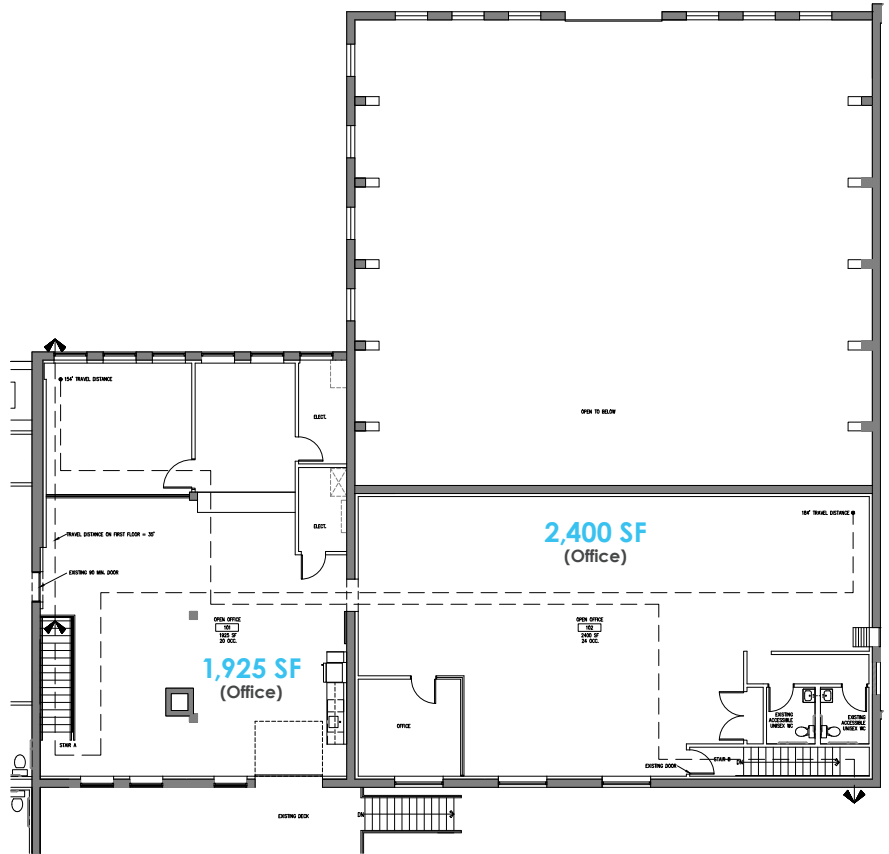
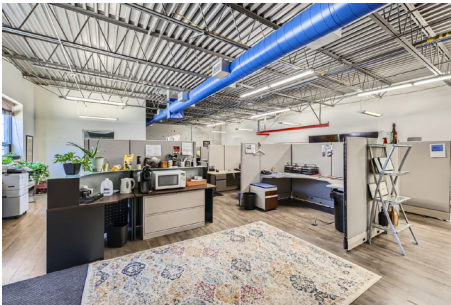
KYLE KALIVODA
DIRECTOR
KYLE@MONARCHCRE.COM
763 242 8127

BEN JENSEN
PRINCIPAL
BEN@MONARCHCRE.COM
612 999 5339

MONARCHCRE.COM

FLOOR PLAN

Suite B: 4,325 SF office



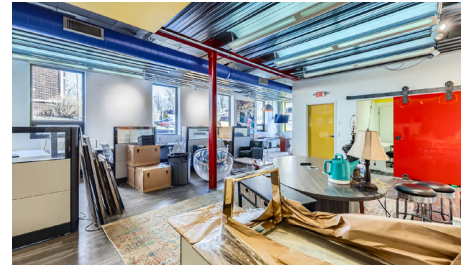
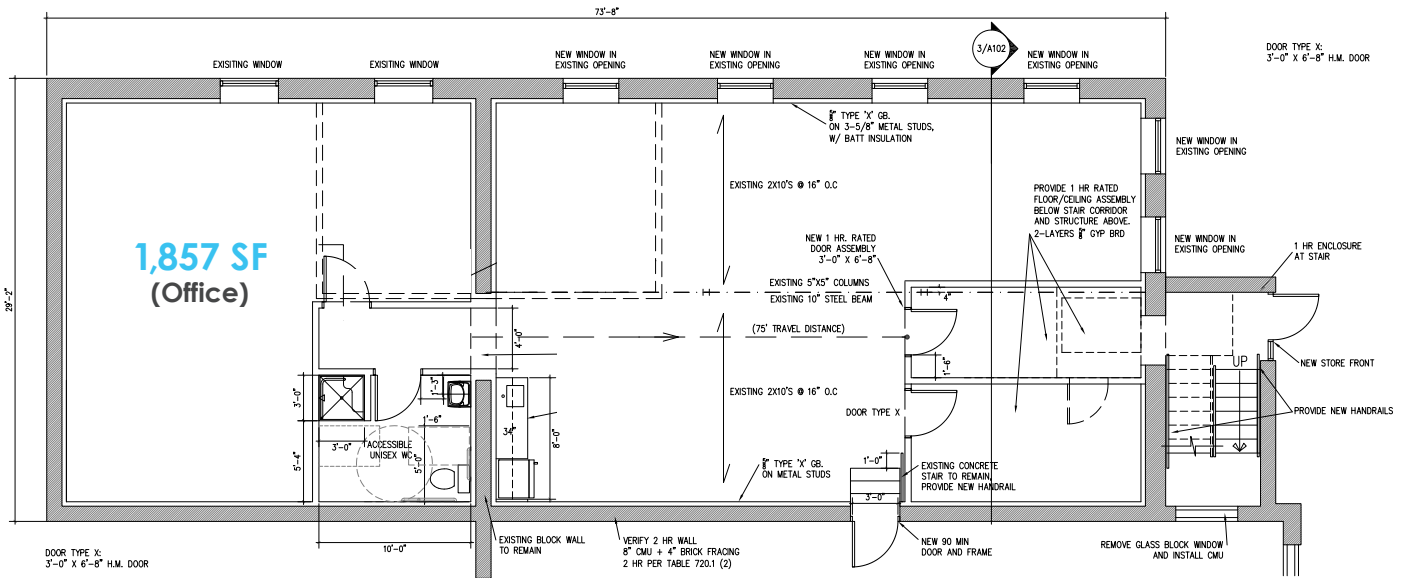
KYLE KALIVODA
DIRECTOR
KYLE@MONARCHCRE.COM
763 242 8127

BEN JENSEN
PRINCIPAL
BEN@MONARCHCRE.COM
612 999 5339

MONARCHCRE.COM

FLOOR PLAN

Suite C: 1,857 SF office



KYLE KALIVODA
 DIRECTOR
 KYLE@MONARCHCRE.COM
 763 242 8127

BEN JENSEN
 PRINCIPAL
 BEN@MONARCHCRE.COM
 612 999 5339